

NOTES:

WASH HOUSING IS FABRICATED FROM 10GA MILD SHEET STEEL AND FACTORY BOLTED/WELDED; EXTERIOR FINISH TO BE PRIMED AND PAINT BLUE. INTERIOR FINISH TO BE PRIME PAINTED.

TANK IS FABRICATED 10GA AND 3/8" MILD STEEL; EXTERIOR FINISH TO BE PRIMED AND PAINT BLUE. INTERIOR FINISH TO BE PRIME PAINTED.

WASH BOOTH IS NOT DESIGNED TO SUPPORT ADDITIONAL WEIGHT.

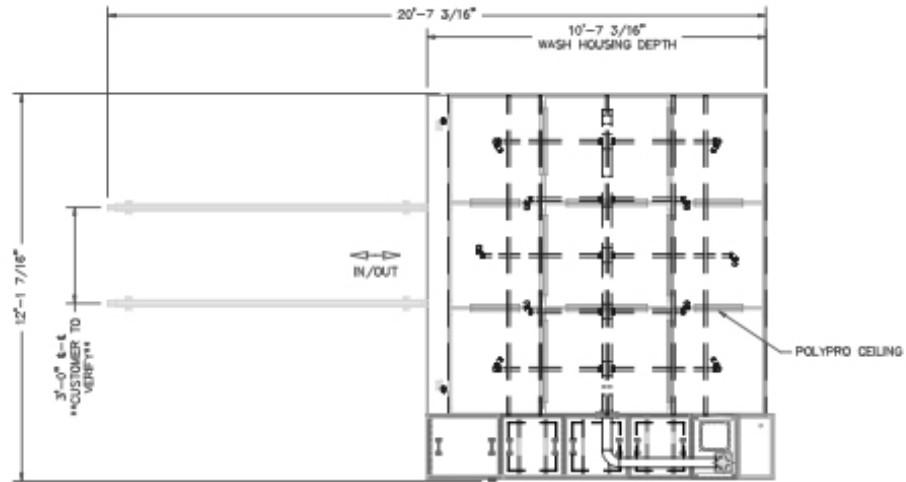
INCLUDED, BUT NOT SHOWN:

- (1) CONTROL PANEL
- (1) CART
- (1) SET TRACKS

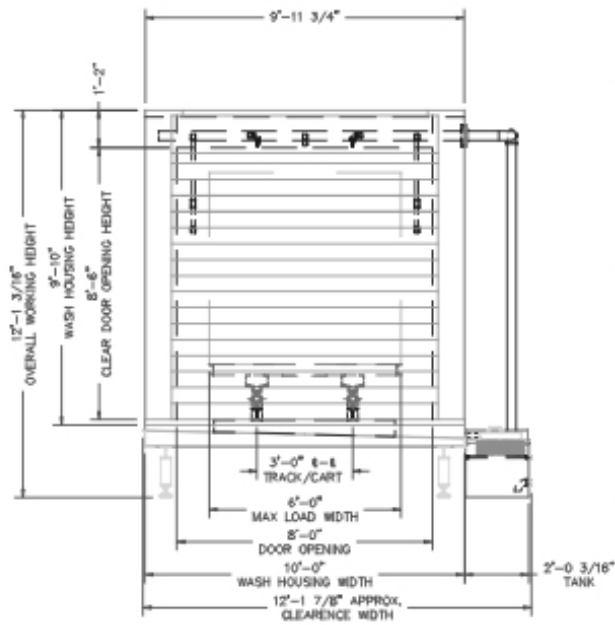
3/4" WATER CONNECTION
40 PSI 10-15 GPM FLOW RATE.

VERTICAL PUMP	
MANUFACTURER	GLEISER
SIZE	11032NS-A
GALLONS/MINUTE	250
HEAD IN FEET	60
DISCHARGE	3"
HOSEPOWER	10
VOLTAGE	460
PHASE	3
RPM	3500
ENCLOSURE	TEFC
QUANTITY	1
LOCATION	

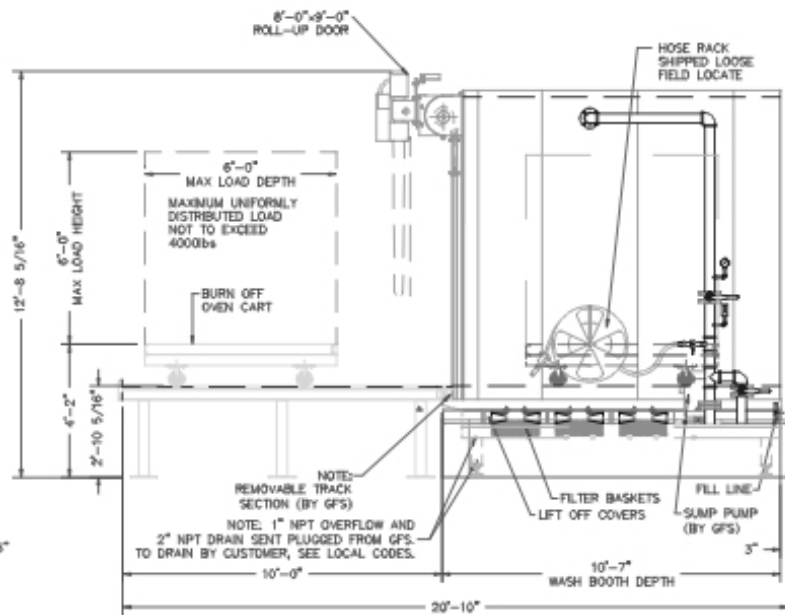
PRODUCT DOORS	
SIZE	8'-0"x9'-0"
TYPE	ROLL-UP 465(1/50)
STYLE	1/2 HP
QUANTITY	1
ELECTRICAL INFO	
OPERATING VOLTAGE 480V 3PH 3W 60HZ	
FULL LOAD AMPS	16
LARGEST MOTOR HP	10
TOTAL HP	10.5
LIGHTING VOLTAGE	N/A
20 AMP SERVICE REQUIRED	



PLAN VIEW



END VIEW



SIDE ELEVATION